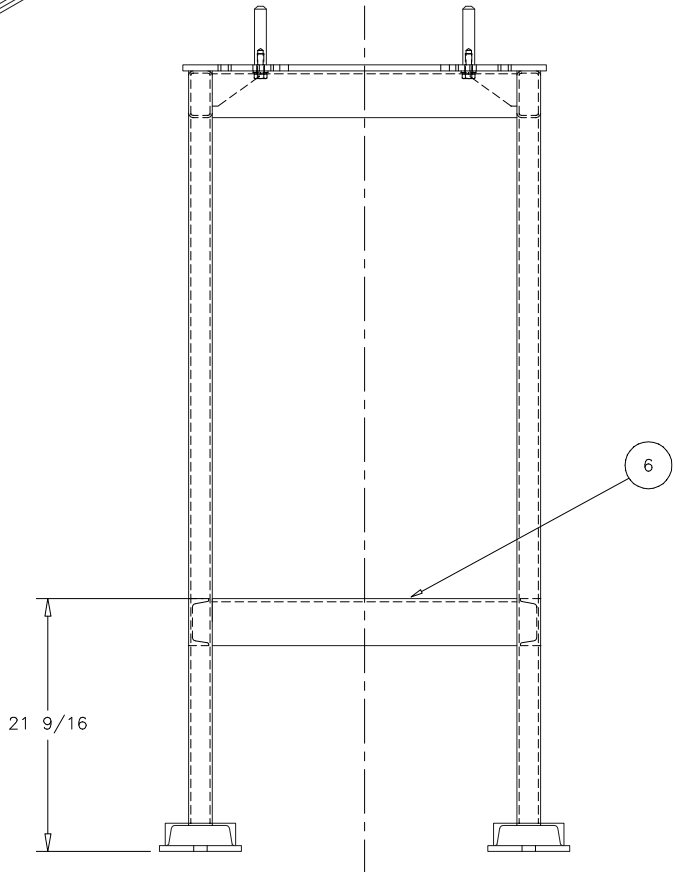
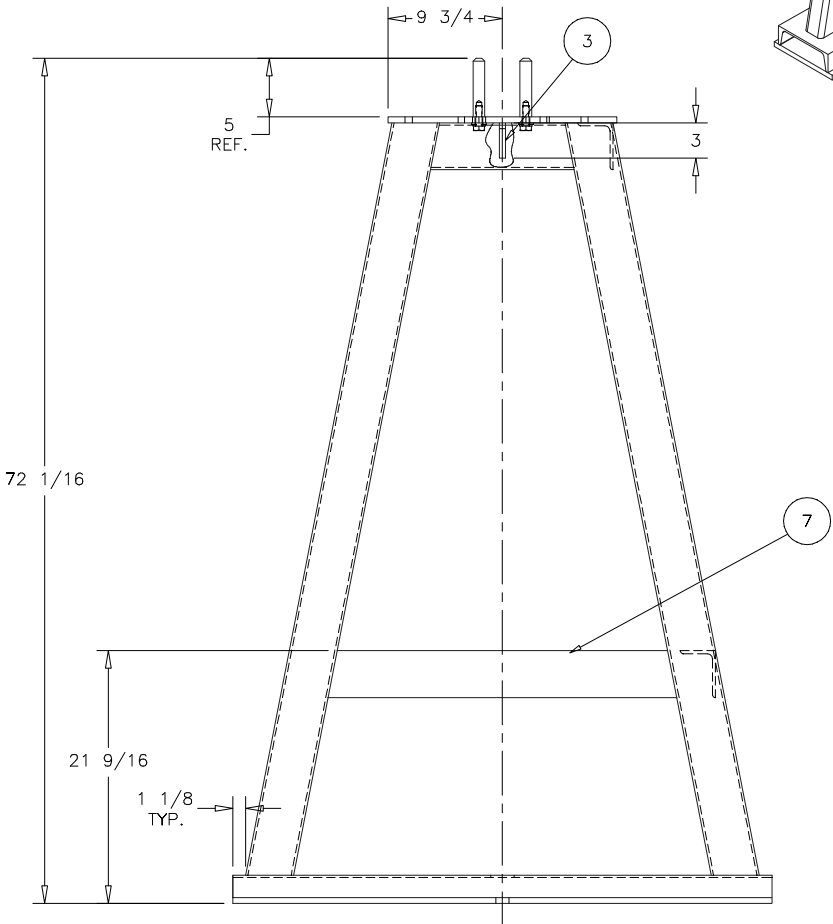
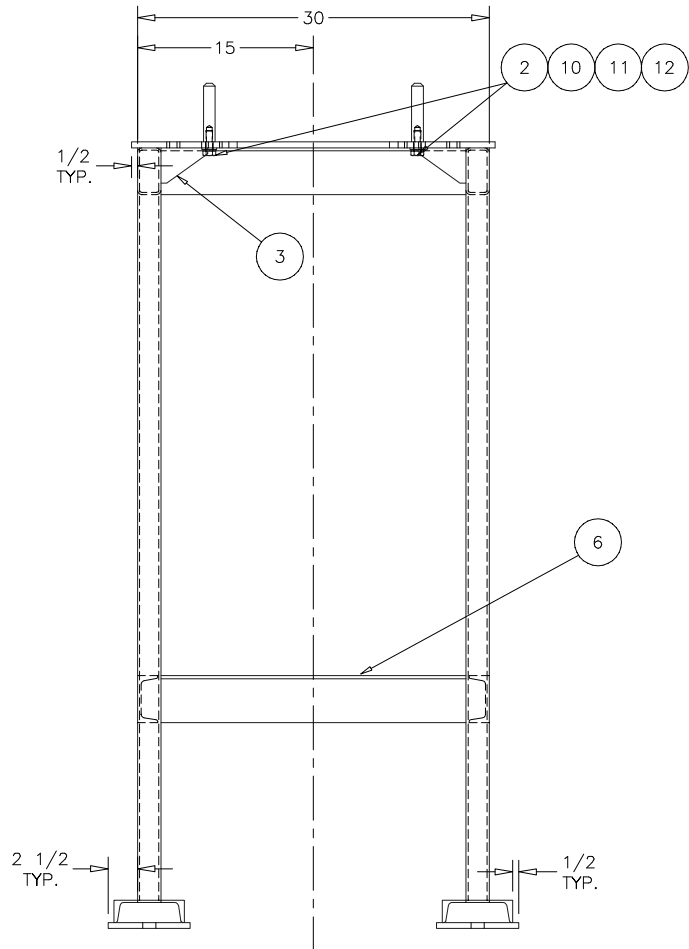
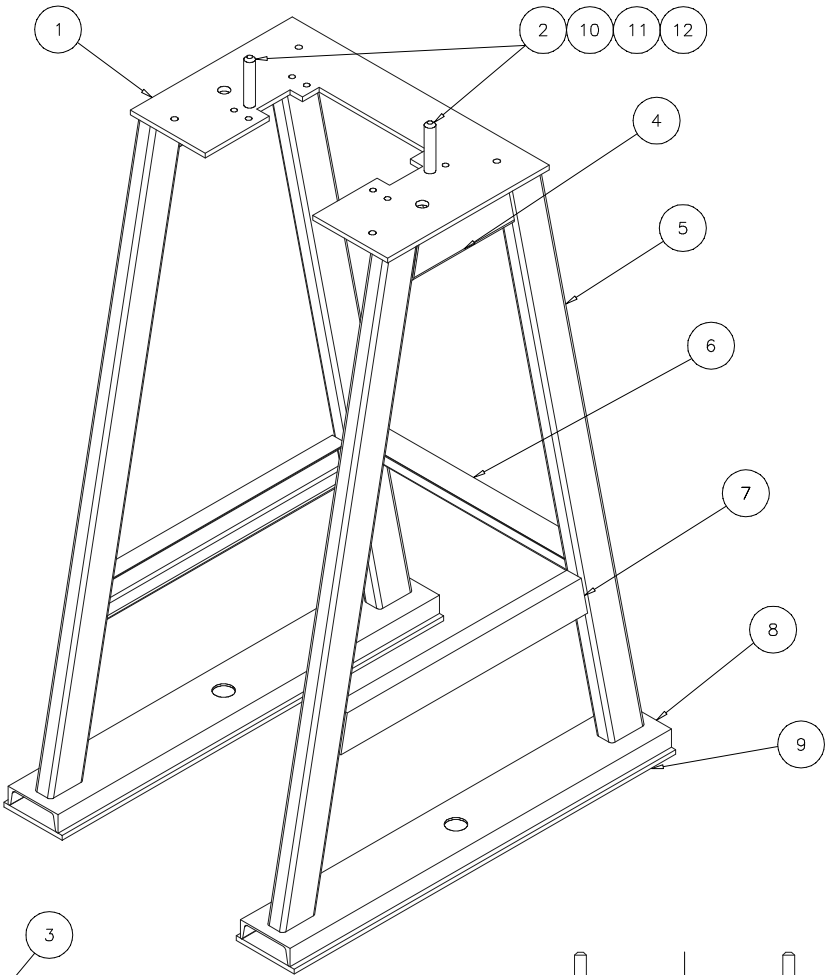
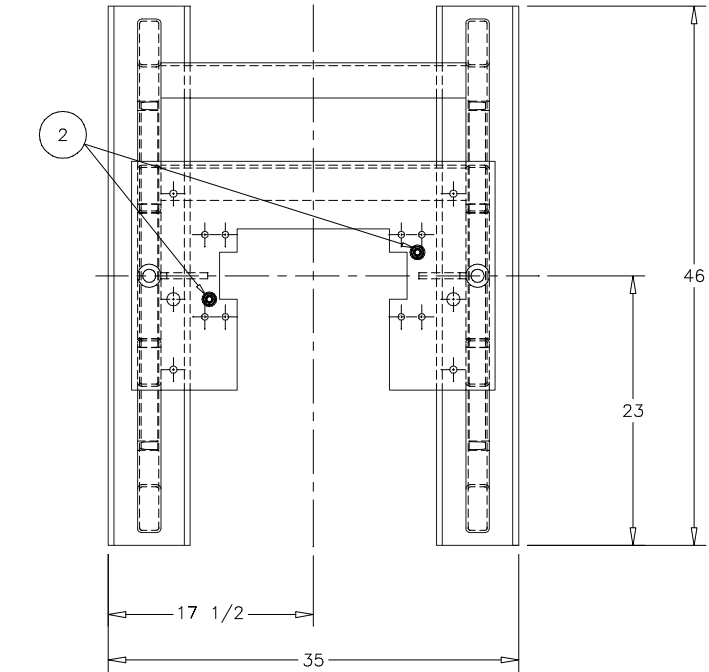


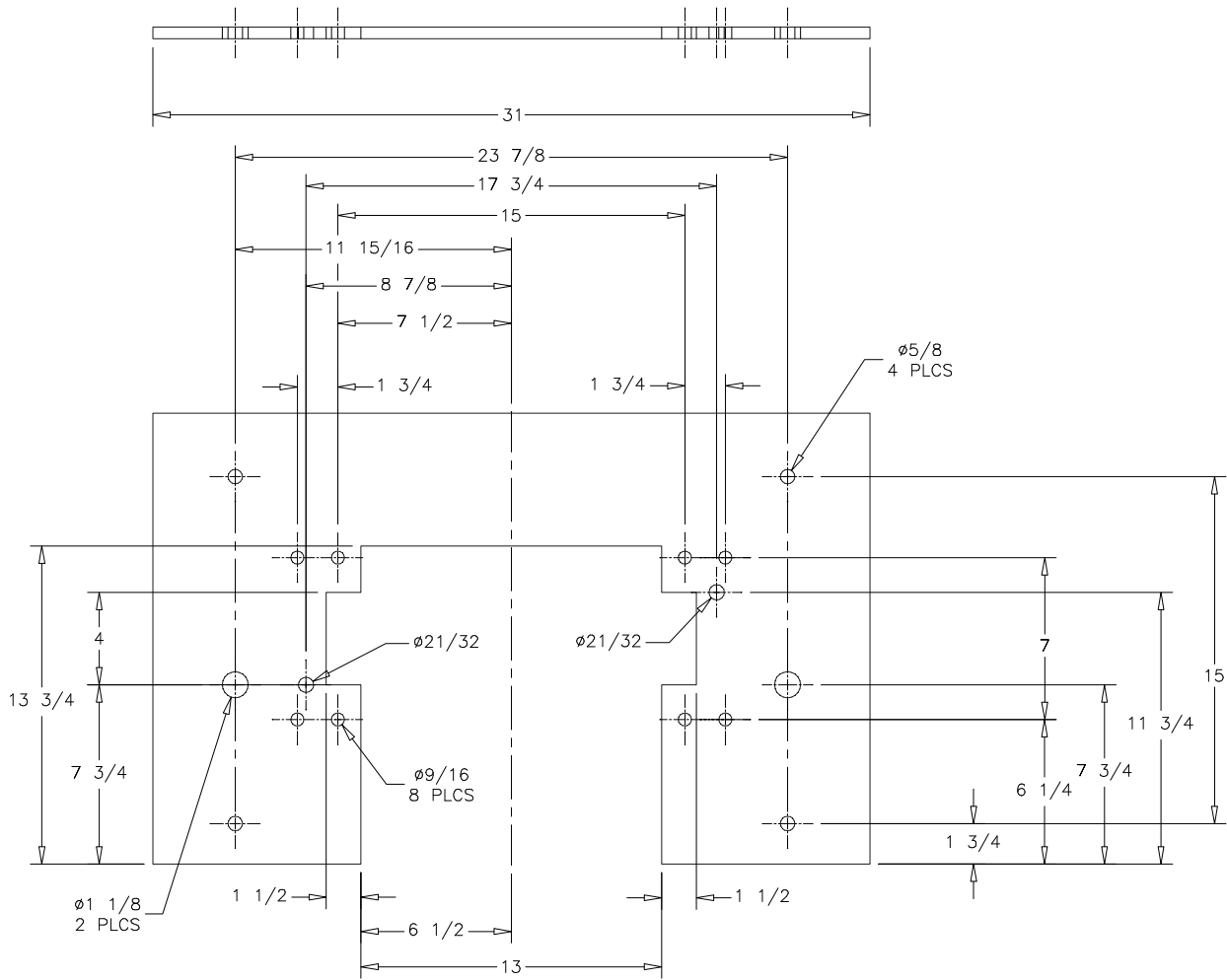
BILL OF MATERIALS					
ITEM	PART NO.	REV.	QTY.	DESCRIPTION	DWG REV.
1			1	PLATE 1/2" HRS, x 19 1/2" x 31"	
2			2	ROUND 1" HRS, x 5"	
3			2	PLATE 1/2" HRS, x 3" x 4"	
4			2	TUBING, RECTANG, 2" X 4" X 3/16" WALL, 12 1/4" LG.	
5			4	TUBING, RECTANG, 2" X 4" X 3/16" WALL, 66 1/8" LG.	
6			2	ANGLE L HRS x 3" x 4" x 1/4 THK x 26" LG-- NO DETAIL	
7			2	CHANNEL, C4 x 7.25 #/FT HRS, 1 3/4" LEG x 29 3/4" LG	
8			2	CHANNEL, C6 x 8.25 #/FT HRS, 1 15/16" LEG x 46" LG	
9			2	PLATE 1/2" HRS, x 7" x 46"	
10			2	BOLT HEX M14X2 X 45mm	
11			2	WASHER LOCK M14	
12			2	WASHER FLAT M14	

- NOTES:
- METAL ARC WELDED CONSTRUCTION. ALL FILLET WELDS ARE TO BE 3/8" CONTINUOUS, UNLESS OTHERWISE SPECIFIED. GRIND ALL OUTSIDE WELDS FLUSH. LIFTING DEVICE USE CERTIFIED WELDERS.
 - WELDMENT TO BE HELD PERPENDICULAR AND PARALLEL TO WITHIN ±1/16" IN ALL DIRECTIONS.
 - PAINT ENTIRE FABRICATION INSIDE AND OUT WITH HIGH TEMPERATURE ALUMINUM PRIMER AND FINISH COAT. ALL SURFACES MUST BE CLEANED, DRY, AND OIL FREE. SEE PAINT SPECIFICATIONS ON DWG 2189759.
 - ALL ITEMS CAN BE A METRIC EQUIVALENT.

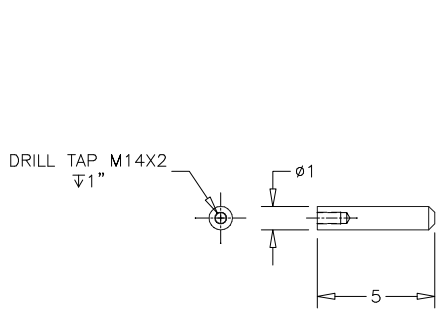


REV	DESCRIPTION	BY	CHK'D	APP'D	DATE
H	REDRAWN TO SCALE, UPDATED DETAILS	LN			4/18/2017

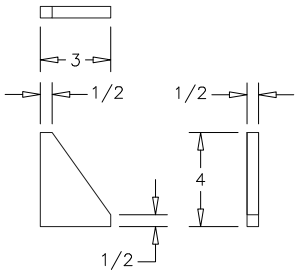
TOLERANCES SPECIFIED INCH DIMENSIONS FRAC ± 1/16 DEC ± .005 ANGLE ± 0.5° METRIC DIMENSIONS 0 mm = ± 0.0 mm = ± 125 ALL SURFACES MAX. ROUGHNESS --REMOVE ALL BURRS. --BREAK ALL SHARP EDGES.		NAME	DATE	TITLE: SPARE NOZZLE STAND
		DRAWN LN	4/17/2017	
		CHECKED RM	4/18/2017	D - 2032121
		APPROVED MK	4/18/2017	
		SIMILAR TO		REV H
		SCALE: 1/8	SHEET: 1 OF 3	



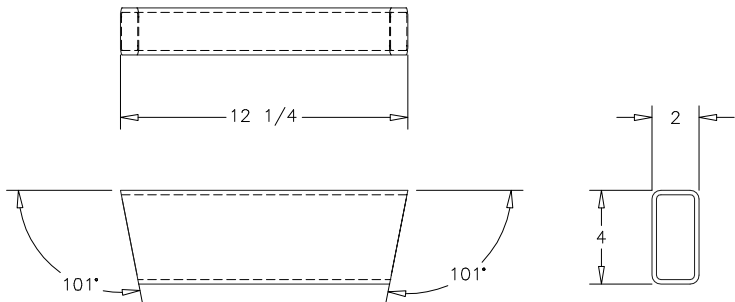
DETAIL ITEM #1
SCALE: 1/2
1 REQ'D



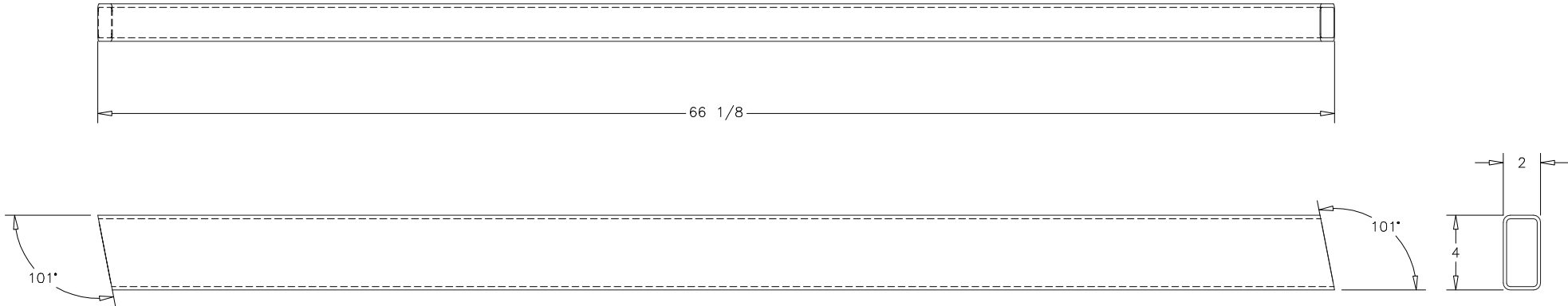
DETAIL ITEM #2
SCALE: 1/2
2 REQ'D



DETAIL ITEM #3
SCALE: 1/2
2 REQ'D



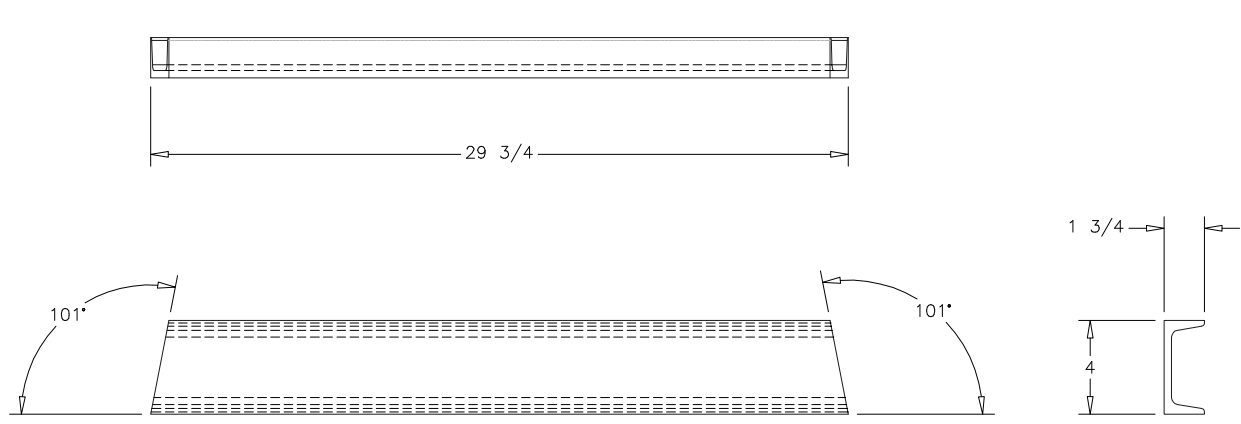
DETAIL ITEM #4
SCALE: 1/2
2 REQ'D



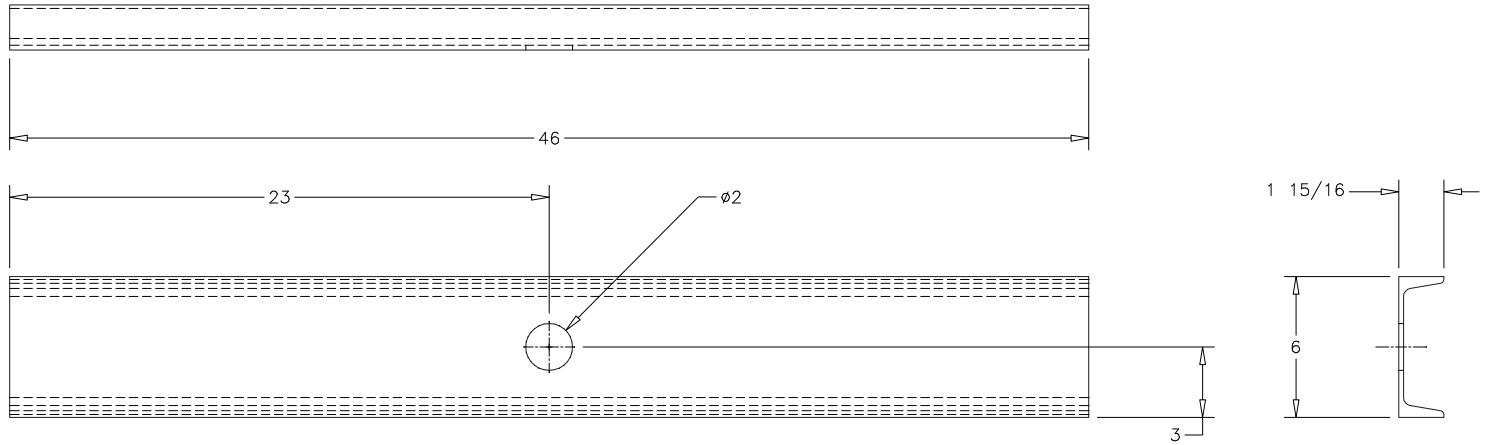
DETAIL ITEM #5
SCALE: 1/2
4 REQ'D

REV	DESCRIPTION	BY	CHK'D	APP'D	DATE
					4/18/2017

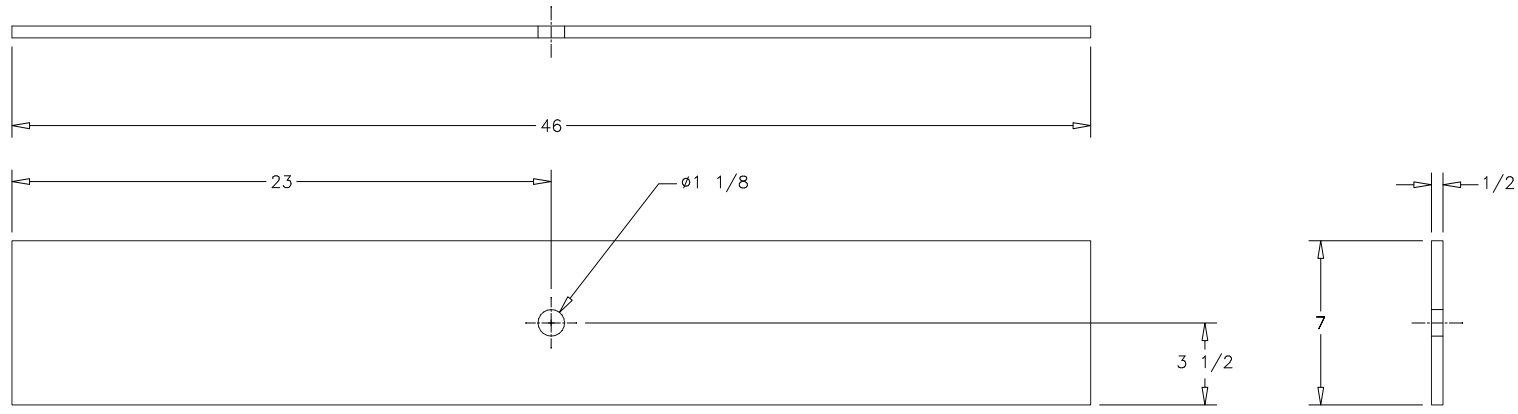
BUSINESS CONFIDENTIAL: THIS DRAWING AND THE INFORMATION CONTAINED THEREIN ARE THE PROPRIETARY AND CONFIDENTIAL PROPERTY OF PYROTEK, INC. AND MAY BE USED ONLY FOR AUTHORIZED PURPOSES. THIS DRAWING MAY NOT BE REPRODUCED WITHOUT PYROTEK'S PRIOR WRITTEN CONSENT.				Pyrotek SNIF® SYSTEMS 100 CLEARBROOK ROAD, SUITE 325 ELMSFORD, NY 10523-1116	
TOLERANCES UNLESS OTHERWISE SPECIFIED INCH DIMENSIONS FRAC ± 1/16 DEC ± .005 ANGLE ± 0.5° METRIC DIMENSIONS 0 mm = ± 0.0 mm = ± 125 ALL SURFACES MAX. ROUGHNESS -REMOVE ALL BURRS. -BREAK ALL SHARP EDGES.		NAME	DATE	TITLE:	
DRAWN		LN	4/17/2017	SPARE NOZZLE STAND	
CHECKED		RM	4/18/2017	D - 2032121	
APPROVED		MK	4/18/2017	REV H	
SIMILAR TO				SCALE: 1/8	
				SHEET: 2 OF 3	



DETAIL ITEM #7
SCALE: 1/2
2 REQ'D



DETAIL ITEM #8
SCALE: 1/2
2 REQ'D



DETAIL ITEM #9
SCALE: 1/2
2 REQ'D

REV	DESCRIPTION	BY	CHK'D	APPV'D	DATE
					4/18/2017

BUSINESS CONFIDENTIAL: THIS DRAWING AND THE INFORMATION CONTAINED THEREIN ARE THE PROPRIETARY AND CONFIDENTIAL PROPERTY OF PYROTEK, INC. AND MAY BE USED ONLY FOR AUTHORIZED PURPOSES. THIS DRAWING MAY NOT BE REPRODUCED WITHOUT PYROTEK'S PRIOR WRITTEN CONSENT.				<div>Pyrotek</div> <div>SNIF® SYSTEMS</div> <div>100 CLEARBROOK ROAD, SUITE 325 ELMSFORD, NY 10523-1116</div>	
TOLERANCES UNLESS OTHERWISE SPECIFIED		NAME	DATE	TITLE:	
INCH DIMENSIONS FRAC ± 1/16 DEC ± .005 ANGLE ± 0.5° METRIC DIMENSIONS 0 mm = ± 0.0 mm = ±		DRAWN	LN	4/17/2017	SPARE NOZZLE STAND
		CHECKED	RM	4/18/2017	
		APPROVED	MK	4/18/2017	
125 ✓ ALL SURFACES MAX.ROUGHNESS		SIMILAR TO		D - 2032121	
-REMOVE ALL BURRS. -BREAK ALL SHARP EDGES.				REV H	
		SCALE: 1/8		SHEET: 3	OF 3